

DriDanube



Danube Transnational Programme

DriDanube



About the project

Drought Risk in the Danube Region – DriDanube

Danube Transnational Programme

- European Regional Development Fund (ERDF)
- Increasing the drought resilience of the communities



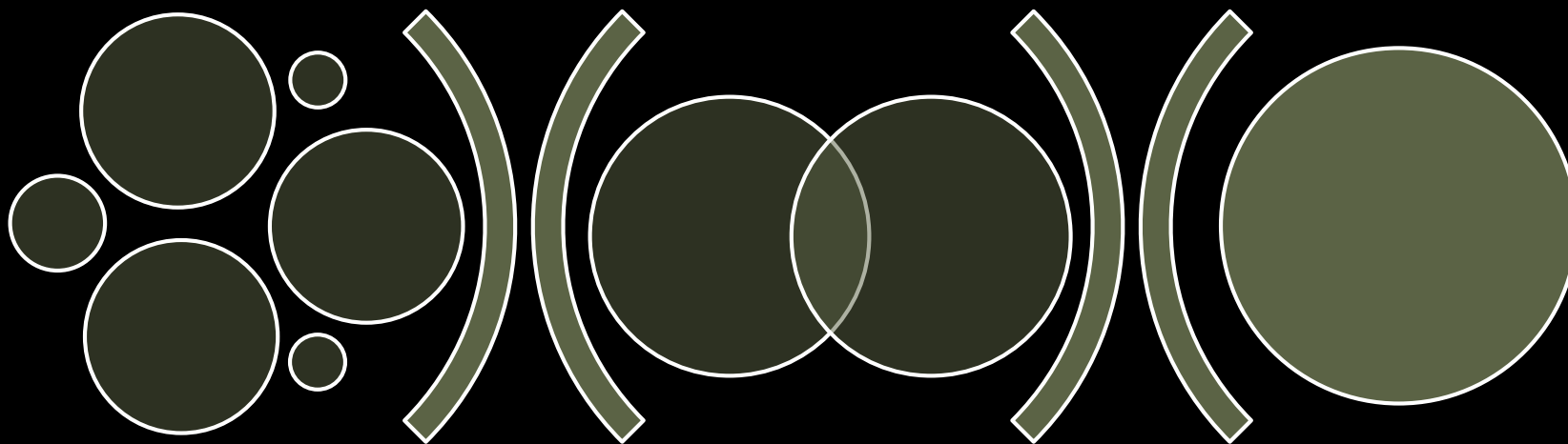
“More frequent droughts and increased negative impacts can be expected in the future on the territory of Slovenia and within the entire Danube region (Sušnik et al., 2017).”



Outcomes

- Overview of existing procedures
- Unified methodology
 - *Drought risk assessment*
 - *Drought impact estimation*
- Methodology implementation
 - *Drought prediction algorithm*
 - *Reporters network*
 - *Pilot actions*
 - *Drought User Service - DROUGHTWATCH*





MetOP/ASCAT

SPOT/VEGETATION

PROBA-V

Terra/MODIS

Other projects,databases...

Meteorological station data ARSO

Reporters network

SWI, H0524
Anomalies

NDVI

VegCon

Rainless period duration

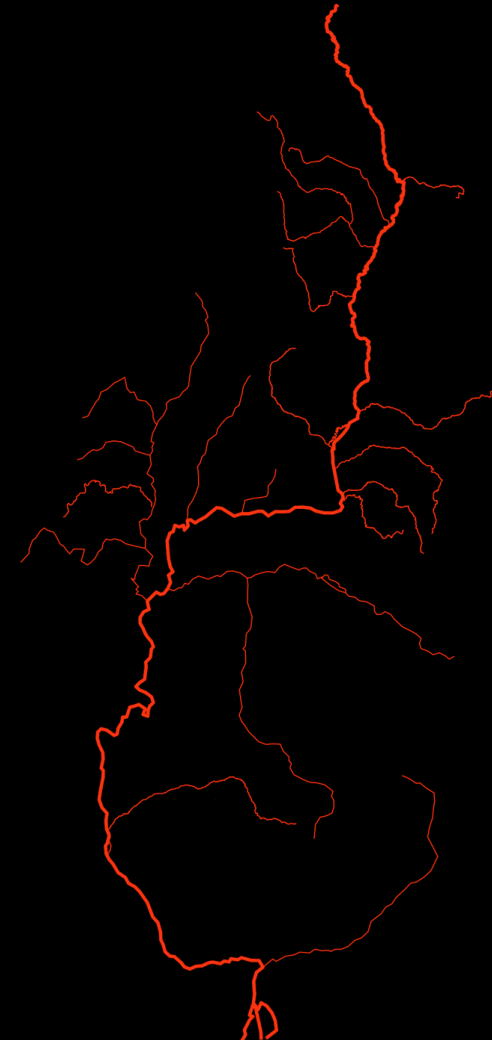
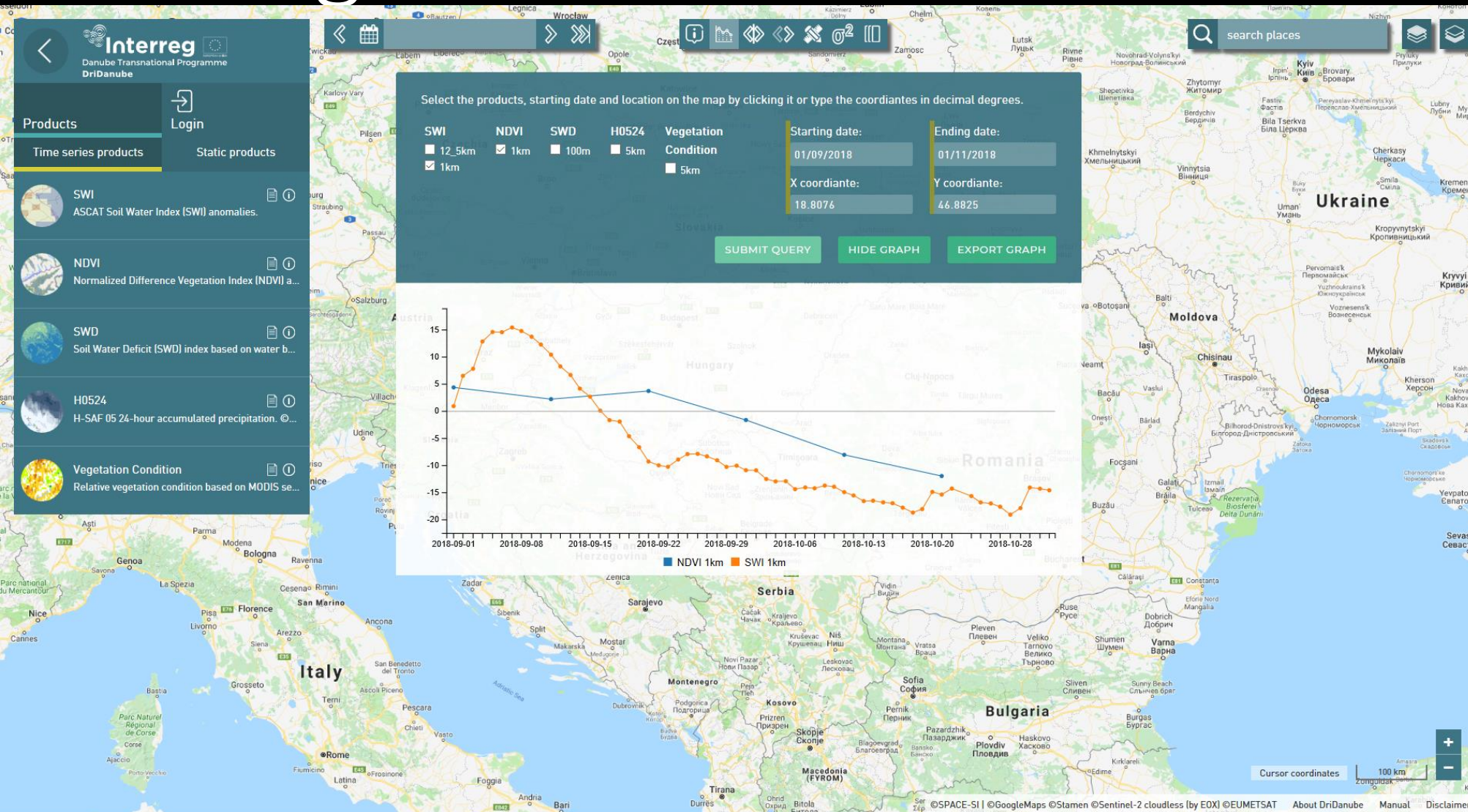
SWD

Yield prediction

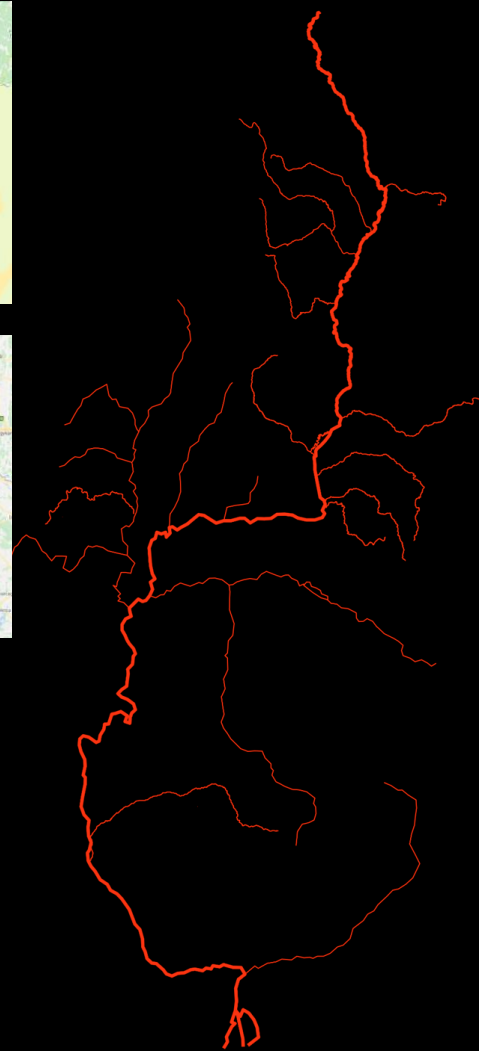
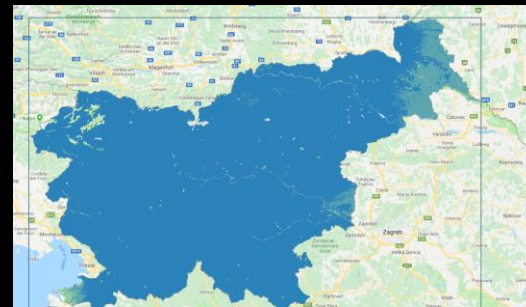
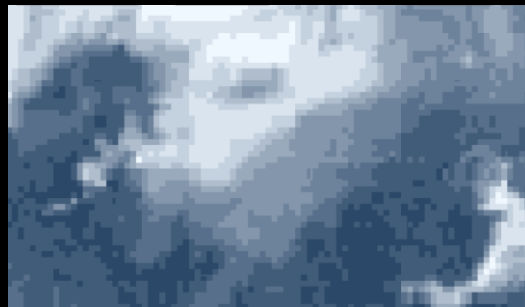
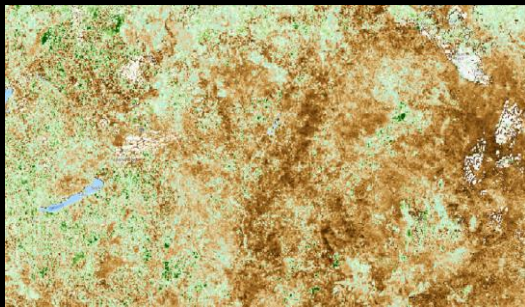
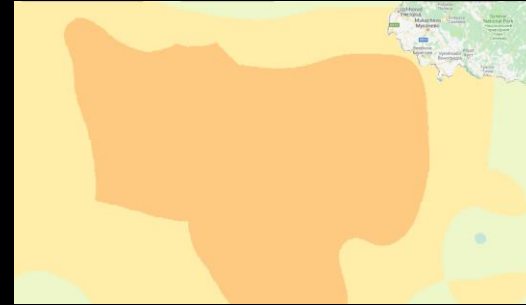
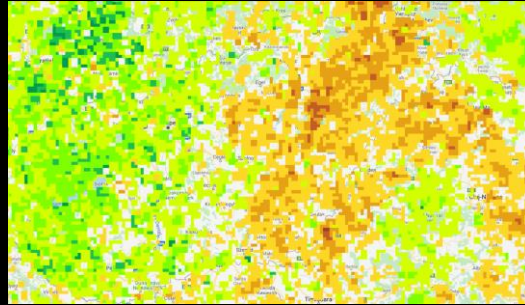
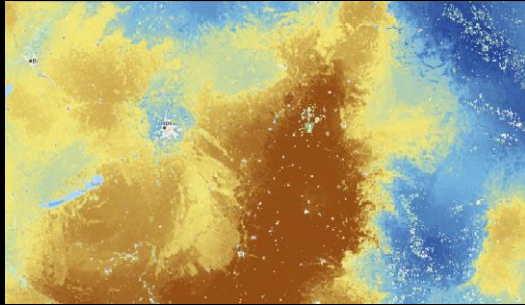
DW



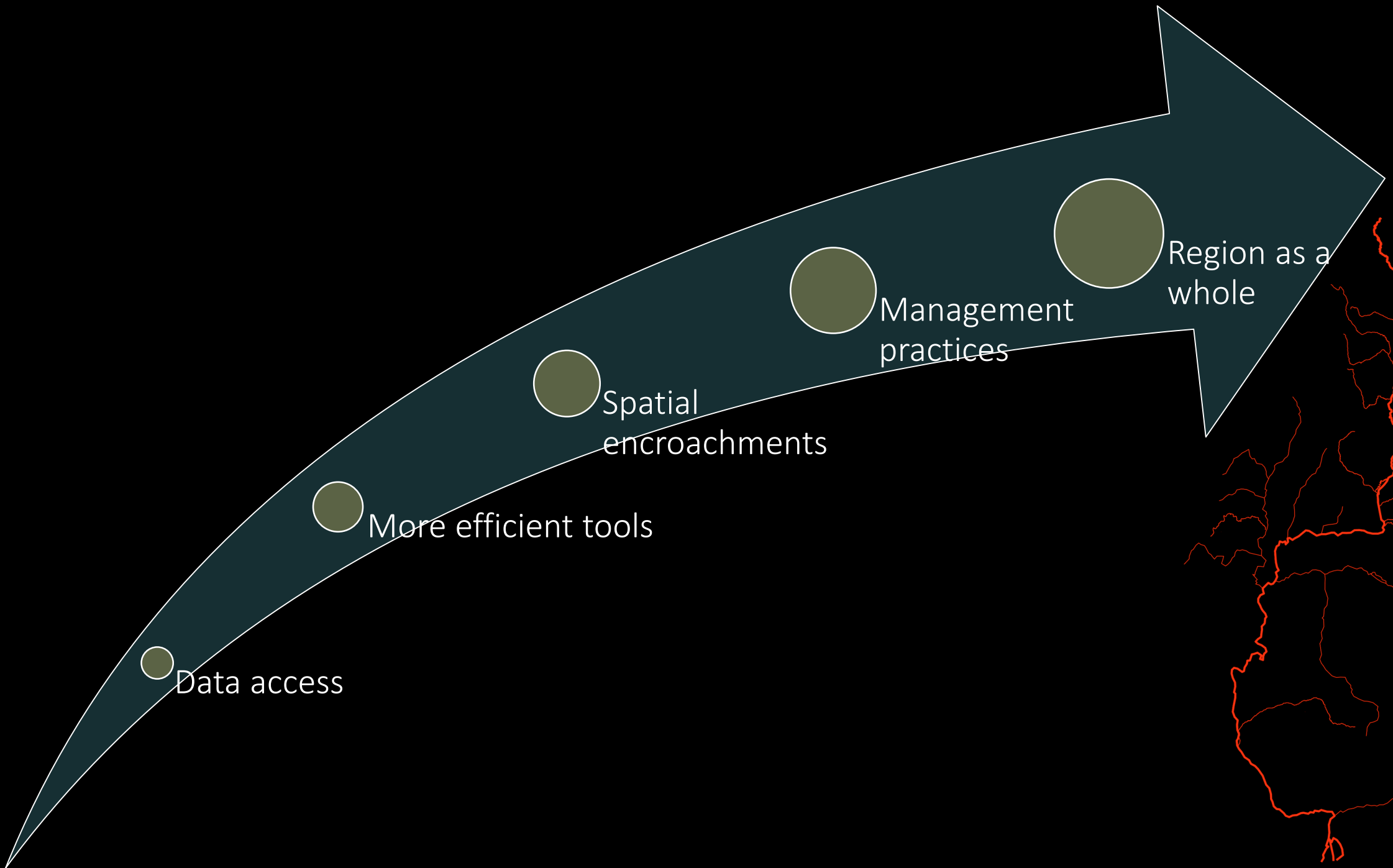
DroughtWatch



Available datasets



{ ... }



Region as a whole

Management practices

Spatial encroachments

More efficient tools

Data access



Thank you for your attention

